

MICRON INOX



Performance,
safety and stability,
hygienic and easy
to clean

AC POWER
traction motor
without brushes:
less need for servicing
greater power output



Entirely constructed in stainless steel or non-corrosive material

- **Frame and tiller arm** with protection grade against water sprays
- **Levers, masts and lifting cylinder** in stainless steel or non-corrosive material
- **Gear box case** made with fusion in Aisi 304 stainless steel
- **Traction motor** in "AC" alternate current, with IP 55 protection grade
- **Bearings, pins and bushes** in stainless steel on wheels, rollers and masts
- **Push button control box** in plastic resistant to corrosive agents and protected
- **Load pressure on the ground of drive wheel** easily adjustable with appropriate lock nut
- **Cold store application** (on request)



samag

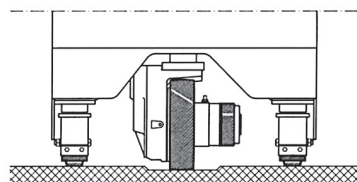
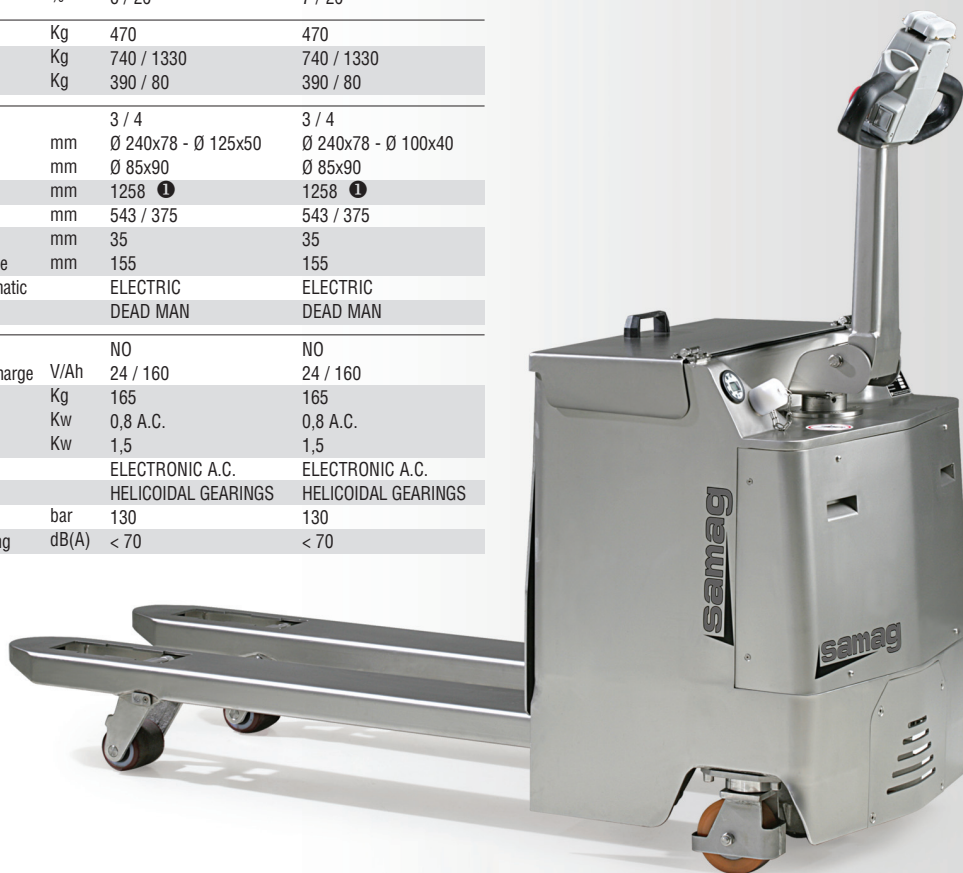
MICRONINOX

Characteristics		SAMAG		SAMAG	
Maker	Firm				
Model	Name	MICRON INOX		MICRON INOX TWIN	
Capacity	Q = Load maximum	t	1,6	1,6	
Load centre	c = Load centre distance	mm	600	600	
Traction	Battery, Diesel, Gas, Electric		BATTERY	BATTERY	
Steering	Draw bar, Operator standing/seated		DRAW BAR	DRAW BAR	
Tyres	WB = Wide Band, V = Vulkollan drive/rear		WB / V	WB / V	
Wheels (x=driving)	Quantity front/rear		1X+2/4	1X+2/4	
Dimensions					
Lift height	h3 = Lift	mm	130	130	
Fork carrier plate	DIN / F.E.M. / ISO / Covering		NO	NO	
Forks	s - e - l	mm	60 - 170 - 1150	60 - 170 - 1150	
Overall dimensions	L2 = Length including fork support	mm	564	564	
	B = Total width	mm	655	655	
Turning radius	Wa	mm	1442 ①	1442 ①	
Load position	X from middle front axes	mm	878 ①	878 ①	
Aisle width	Ast with pallet 800x1200 longitudinal	mm	1964	1964	
Performance					
Speed	Movement with/without load	Km/h	6 / 6	6 / 6	
	Lift with/without load	m/s	0,02 / 0,07	0,02 / 0,07	
	Lowering with/without load	m/s	0,11 / 0,05	0,11 / 0,05	
Gradeability	With/Without load	%	-	-	
Max. gradeability	With/Without load	%	6 / 20	7 / 20	
Weights					
Weight	Including battery	Kg	470	470	
Axle load	With load front/rear	Kg	740 / 1330	740 / 1330	
	Without load front/rear	Kg	390 / 80	390 / 80	
Traction					
Wheels	Quantity front/rear		3 / 4	3 / 4	
	Front dimensions	mm	Ø 240x78 - Ø 125x50	Ø 240x78 - Ø 100x40	
	Rear dimensions	mm	Ø 85x90	Ø 85x90	
Wheel base	Y	mm	1258 ①	1258 ①	
Wheel track	Al tyre centres front/rear	mm	543 / 375	543 / 375	
Space	With load m1 at lowest point	mm	35	35	
	With load m2 at centre of wheel base	mm	155	155	
Service brake	Mechanical/hydraulic/electric/pneumatic		ELECTRIC	ELECTRIC	
Parking brake	With foot/hand/dead man		DEAD MAN	DEAD MAN	
Controls					
Battery	DIN		NO	NO	
	Tension/capacity with 5 hrs. of discharge	V/Ah	24 / 160	24 / 160	
Electric motor	Weight	Kg	165	165	
	Traction motor power (S2 60 min.)	Kw	0,8 A.C.	0,8 A.C.	
	Lift motor power (S3 15%)	Kw	1,5	1,5	
Transmission	Type		ELECTRONIC A.C.	ELECTRONIC A.C.	
Drive unit	Type		HELICOIDAL GEARINGS	HELICOIDAL GEARINGS	
Work pressure	For equipment (accessories)	bar	130	130	
Noise level	Average noise level of human hearing	dB(A)	< 70	< 70	

SAMAG products and brochure specifications are subject to change without notice.

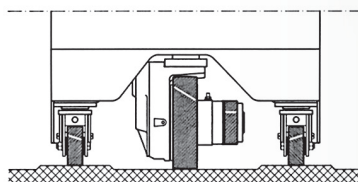
Ast includes "a" (manoeuvring space) = 200 mm

① With forks in rest position = + 66 mm.



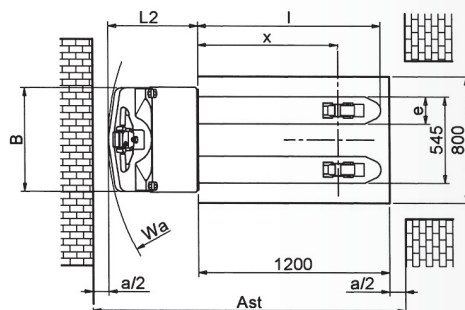
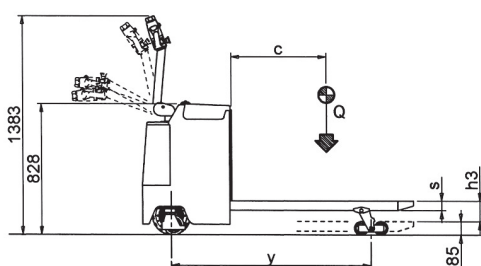
MICRON INOX STANDARD

Spring-loaded drive wheel, carrying swivel castors



MICRON INOX TWIN

Carrying drive wheel, spring-loaded swivel castors



samag

SAMAG Industriale s.r.l.

Località Pagana - 29017 Fiorenzuola d'Arda
PC - ITALY

Tel. 0523.981598 - Fax 0523.943128

www.samag.it - info@samag.it