



Version with operator's platform available with and without side protection gates



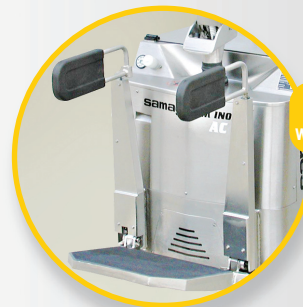
AC POWER
traction motor
without brushes:
less need for servicing
greater power output

Entirely constructed in stainless steel or non-corrosive material

- **Levers, masts and lifting cylinder** entirely constructed in stainless steel or non-corrosive material
- **Gear box case** made with fusion in Aisi 304 stainless steel, **traction motor** in "AC" alternate current, with IP 55 protection grade and thermic protection device
- **Spring-loaded central drive wheel** with adjustable load, for an efficiently constant grip to the floor
- **Electronic and hydraulic components** protected against water sprays
- **Push button control box** in plastic resistant to corrosive agents and protected
- **Cold store application** (on request)



Characteristics	Maker	Firm	SAMAG	SAMAG	
Model	Name		TM INOX	TM INOX PO	
Capacity	Q = Load maximum	t	2,0	2,0	
Load centre	c = Load centre distance	mm	600	600	
Traction	Battery, Diesel, Gas, Electric		BATTERY	BATTERY	
Steering	Draw bar, Operator standing/seated		DRAW BAR	DRAW BAR	
Tyres	WB = Wide Band, V = Vulkollan front/rear		WB / V	WB / V	
Wheels (x=driving)	Quantity front/rear		1X+2/4	1X+2/4	
Dimensions	Lift height	h3 = Lift	mm	120	120
Fork carrier plate	DIN / F.E.M. / ISO / Covering		NO	NO	
Forks	s - e - l	mm	60 - 170 - 1150	60 - 170 - 1150	
Overall dimensions	L2 = Length including fork support	mm	649	762 - 1136	
	B = Total width	mm	770	770	
Turning radius	Wa	mm	1543 ②	1679 - 2038 ②	
Load position	X from middle front axes	mm	895 ②	895 ②	
Aisle width	Ast with pallet 800x1200 longitudinal	mm	2049	2184-2543	
Performance	Speed	Movement with/without load	Km/h	5,9 / 5,9	5,9 / 5,9 - 7,5 / 7,5
	Lift with/without load	m/s	0,02 / 0,07	0,02 / 0,07	
	Lowering with/without load	m/s	0,11 / 0,05	0,11 / 0,05	
Gradeability	With/Without load	%	-	-	
Max. gradeability	With/Without load	%	7 / 17	7 / 17	
Weights	Weight	Including battery	Kg	660	720 ③
Axle load	With load front/rear	Kg	969 / 1691	980 / 1740 ③	
	Without load front/rear	Kg	530 / 130	585 / 135 ③	
Traction	Wheels	Quantity front/rear		3 / 4	3 / 4
	Front dimensions	mm	Ø 257x102 - Ø 125x50	Ø 257x102 - Ø 125x50	
	Rear dimensions	mm	Ø 85x70	Ø 85x70	
Wheel base	Y	mm	1344	1344	
Wheel track	Al tyre centres front/rear	mm	560 / 390	560 / 390	
Space	With load m1 at lowest point	mm	35	35	
	With load m2 al centre of wheel base	mm	155	155	
Service brake	Mechanical/hydraulic/electric/pneumatic		ELECTRIC	ELECTRIC	
Parking brake	With foot/hand/dead man		DEAD MAN	DEAD MAN	
Controls	Battery	DIN		NO	NO
	Tension/capacity with 5 hrs. of discharge	V/Ah	24 / 240-270	24 / 240-270	
Electric motor	Weight	Kg	240	240	
	Traction motor power (S2 60 min.)	Kw	1,5 A.C.	1,5 A.C.	
	Lift motor power (S3 15%)	Kw	1,5	1,5	
Transmission	Type		ELECTRONIC A.C.	ELECTRONIC A.C.	
Drive unit	Type		HELICOIDAL GEARINGS	HELICOIDAL GEARINGS	
Work pressure	For equipment (accessories)	bar	130	130	
Noise level	Average noise level of human hearing	dB(A)	< 70	< 70	



Operator's platform with side protections



Version with weighing system and visual terminal in INOX, and IP65 protection grade

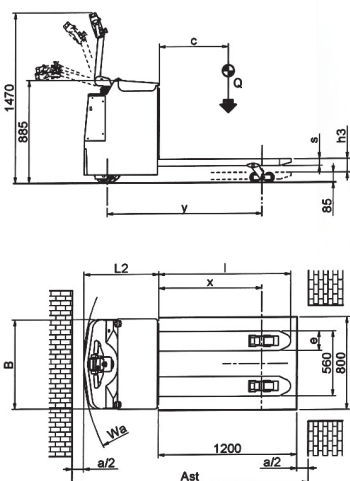


SAMAG products and brochure specifications are subject to change without notice.

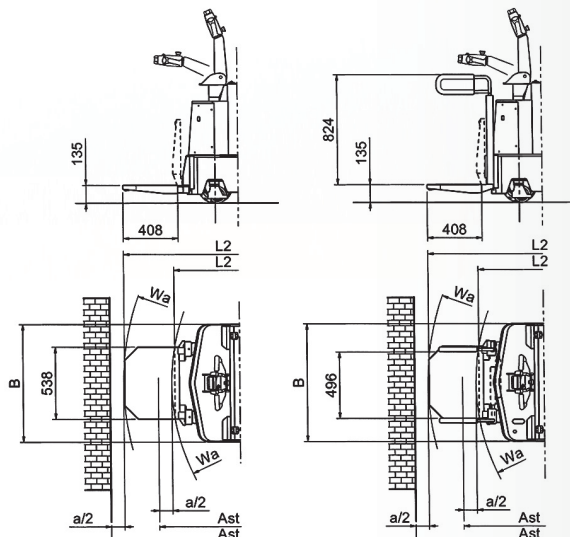
Ast includes "a" (manoeuvring space) = 200 mm.

- ① The first value refers to folded platform, the second to lowered platform for operator transport.
- ② With forks in rest position = + 49 mm.
- ③ Values without operator.

STANDARD VERSION



VERSION WITH OPERATOR'S PLATFORM



WITHOUT SIDE PROTECTIONS

WITH SIDE PROTECTIONS

samag

SAMAG Industriale s.r.l.
 Località Pagana - 29017 Fiorenzuola d'Arda
 PC - ITALY
 Tel. 0523.981598 - Fax 0523.943128
 www.samag.it - info@samag.it